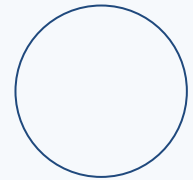


PergOzy Catalogue

Where Comfort Meets
Innovation



01

PergOzy

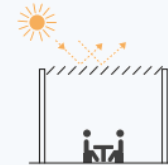
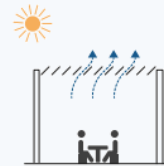
Aluminum Smart Motorised Louvered Pergola



About PergOzy

Unique outdoor space

- Smartly angled louvers automatically close to shield you from rain, keeping your outdoor space dry and usable in wet weather.
- Adjustable open louvers allow you to fine-tune airflow based on wind conditions, ensuring comfort without compromising structure.
- With up to 80% openness, the pergola promotes excellent natural ventilation, preventing heat buildup under the roof.
- Easily adjust louver angles to provide full shade or partial sunlight, effectively reducing UV exposure and heat while maintaining brightness.



Pergola Quality



Varied open/close options for ideal sunshade and heat insulation.



Varied open/close options for ideal sunshade and heat insulation.



Rainproof structure with IP67-rated electrical components for full outdoor resistance.



Wind resistant up to 80 km/h.



Aesthetic design with the strength to support ceiling fans or heaters.



Customizable in size, colour, and upgrade according to the venue



Fire protection due to aluminum magnesium silicon alloy body, compared with wood base product.



02 PergOzy products

Advantage of Smart Integration and Design



Products comparison

When it comes to enhancing your outdoor living space, **PergOzy stands out as the smarter, more stylish, and more versatile alternative to traditional patios and other pergola brands — offering premium features, modern design, and long-term value that competitors simply can't match.**

- **Adjustable Blade System** - Take full control of sunlight, airflow, and shade with motorised or manual louvre blades — a major upgrade from fixed-roof patios.
- **Modern Architectural Design** – Sleek appearance, minimalist lines add a contemporary edge to your outdoor space, far beyond the look of standard patio structures.
- **All-Weather Protection** - PergOzy's closing blades offer reliable protection from rain and harsh sun, making it functional year-round — unlike open or static patios.
- **Integrated Features (Optional)** - Add lighting, heating, and water drainage with ease — features typically unavailable or costly to add to standard patios.
- **Premium Build Quality** - Crafted from high-grade aluminium with **weather-resistant** finishes for long-lasting durability, unlike timber or basic steel patios.
- **PergOzy is 100% Australian made — from design to manufacture.** This local production gives us a significant advantage, allowing for a fast **2–4 weeks lead time** from site measurement to installation.

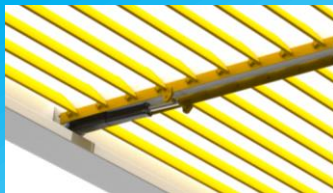


PergOzy design



Precise Actuator

High quality 6063 High strength aluminum-Mg-Si alloy, with powder coating on the surface, rust-free corrosion-free, maintenance-free, safe and environmentally friendly, and last more than 20 years.



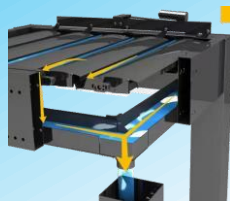
Blades Connection

Our IP67-rated actuator offers reliable, weatherproof control for opening and closing blades and outdoor zipper blinds, ensuring smooth, synchronized operation of your gazebo with remote convenience.



Double-layer Blades

High quality 6063 High strength aluminum-Mg-Si alloy, high density powder coating on the surface, rust-free corrosion-free, maintenance-free, safe and environmentally friendly, and can be used for more than 20 years.



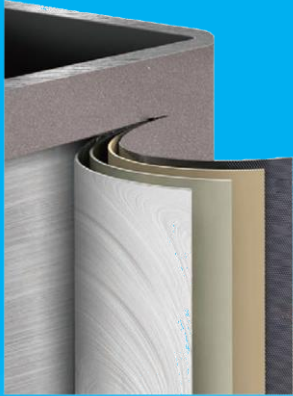
Quick Drainage System

Our double-blade louver features a discreet groove for optional lighting, which can be seamlessly covered if not needed. The hollow profile allows for further insulation by polyester, and the reinforced structure for strength to supports any additional accessories.

A minimalist design that can be fully integrated with architectural aesthetics



Our powerful design



Composite material

6063 Aluminum Alloy and coating layers

Basal Layer: high temperature
dusting layer

Tungsen Carbide Layer: High strength
reinforced magnesium silicon alloy

Water-rust resistance layer: Enhanced
corrosion resistance

Chemical Stability: Prolong color
corrosion resistance

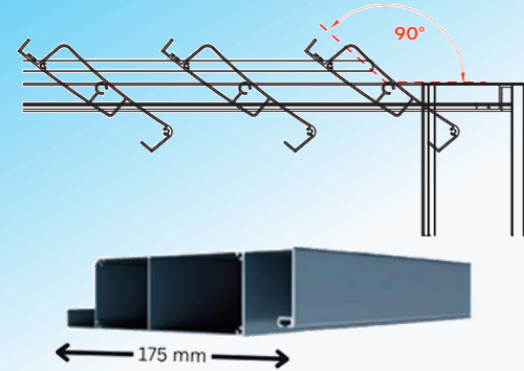
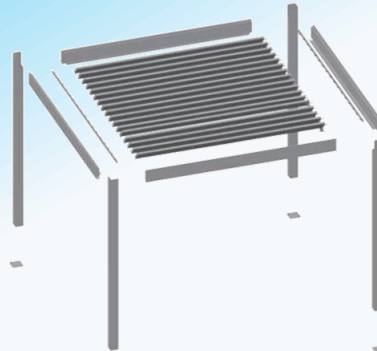
Modular structure, site assembly

Crafting innovation with simplicity
and elegance in design

Blade: Precision prefabricate double blade

Smart Design for compact storage: Design
with truck friendly dimension for easier
package transportation

Assembly: Smart interlocking design between
components allows our team to complete on-
site installation quickly and efficiently.



Louvers

80% Openess factor from
double-blade louvers

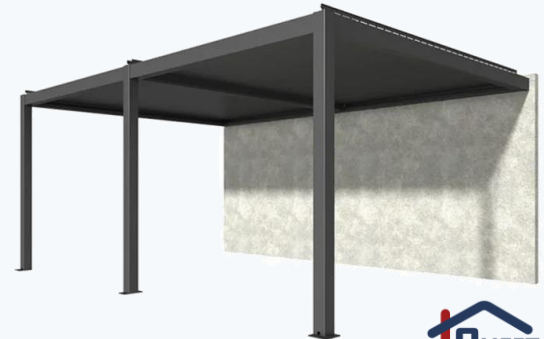
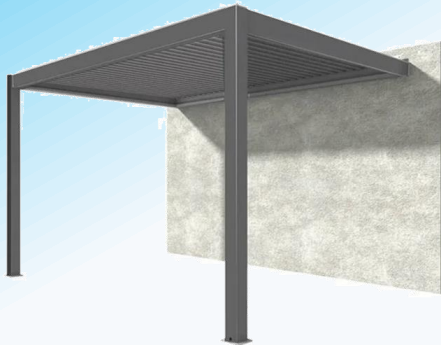
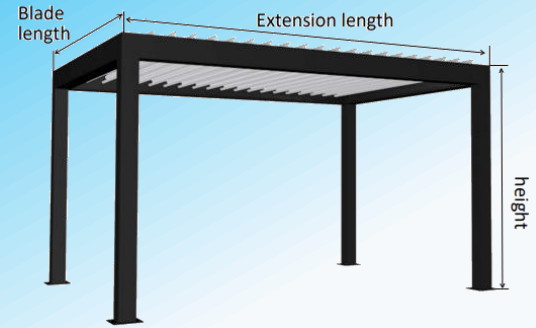
Open angle: more than 90° to
track the sun movement all day

Light customisation: Extra groove
to add on light for further
customisation

Symmetrical Design: Easy for
replacement and assembly

Compound design

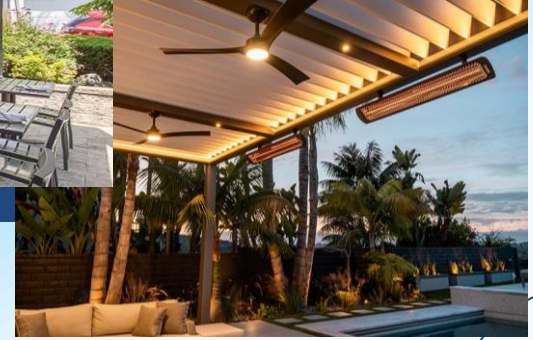
- **Elegant Standard Pergola** – A timeless 4-post design that adds style and shade to gardens, poolside areas, or any open outdoor space.
- **Flexible Connected Pergola** – Ideal for large or corner spaces, multiple pergolas can be linked in a straight line or L-shape to create a spacious, seamless outdoor zone.
- **Space-Saving Wall Pergola** – Attached directly to a wall with fewer posts, this sleek option enhances balconies or narrow areas with a modern, open look.
- **Flexible Design Dimension** – Our pergola system is designed with flexibility and durability in mind, offering a modern solution for outdoor spaces. Key specifications include:
 - Blade length: up to 5 meters
 - Extension length: up to 8 meters
 - Maximum total height: 3.4 meters
 - Clearance height: 3 meters



03

PergOzY

accessories



Every Detail Matters — Tailored to Your Every Option.



Heater

Power: 4 settings 240W/960W/1440W/2400W.
Waterproof: IP65 water protected standard.
Mounting option: wall or ceiling mount.
Manual: LED display panel with remote control.
Extra features: Motion sensor and child lock option.
Product size (WxHxL): 980 x 162 x 215 mm.



Remote Control

Power: 4 settings 240W/960W/1440W/2400W.
Waterproof: IP65 water protected standard.
Mounting option: wall or ceiling mount.
Manual: LED display panel with remote control.
Extra features: Motion sensor and child lock option.
Product size (WxHxL): 980 x 162 x 215 mm.



Rain Sensor

Power: 100-240V~0.5A 50/60 Hz.
Waterproof: IP67 water protected standard.
Rain intensity regulation: 1-100 mm/Hr.
Light intensity regulation: 0.2-10 Klux.
Wind intensity regulation: 10-50 km/Hr.
Product size (WxHxL): 100 x 230 x 120 mm.



Ceiling Fan

Power: 240 V at 75W, AC motor.
Waterproof: IP67 water protected standard.
Blade material: ABS Plastic.
Blade detail: 3 blades at pitch angle 19°.
Product size (WxHxL): 36" (912 mm).



Wind Sensor

Power: Solar power.
Waterproof: IP67 water protected standard.
Rain intensity regulation: 1-100 mm/Hr.



Flexible LED Light

Power: DC 24 V at 10W.
Waterproof: IP67 water protected standard.
Color Temperature: Single/CCT/RGB.
Lamp Luminous Flux: 300-1050 (lux).

Roller blinds accessories



Sunscreen Fabric

Composite: 20% Polyester + 80% PVC

Thickness: 0.54 mm +5%

Breaking Strength:

Warp: 1090 N/ 5 cm

Weft: 1040 N/ 5 cm

Opacity:

1 %: Reducing heat, blocking UV, sun and wind.

3 %: Blocking UV, sun, and wind.

5 %: Blocking wind.

Colors:



Motorise roller blind

Material: Aluminium extrusion.

Width: Maximum width 6 meter.

Height: Maximum height 3.8 meter.

Construction features:

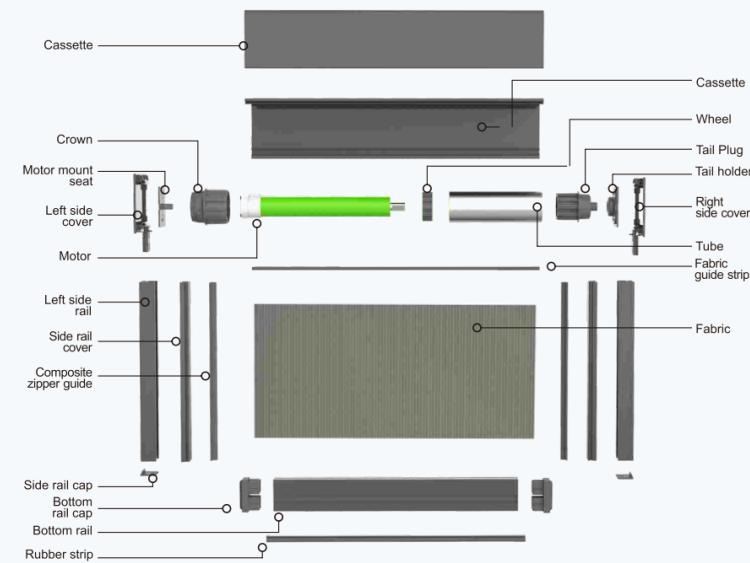
Compact steel design: A simple, refined design for a sleek, modern look.

Seamless cover: Front and rear seams create a smooth, aesthetic appearance.

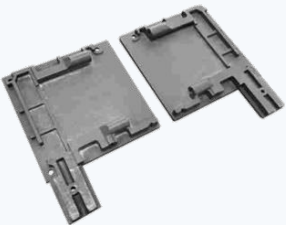
Precision fabric guide: Dual nano strips ensure smooth, vertical zipper alignment for flawless operation

Strong rail: Aluminum rail with hidden welds and screw for a clean finish.

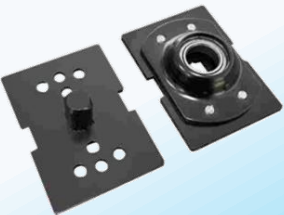
Motorised Roller Blind



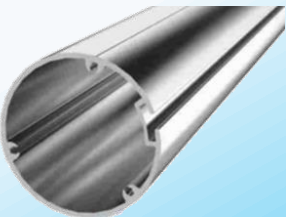
Left side cover



Right side cover



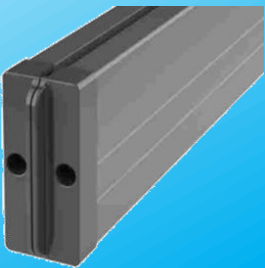
Fabric guide strip



Side rail set



Bottom rail



**SMART DESIGN IN
EVERY DETAIL**



Thanks!

Do you have any questions?

Email: sales@sheetmetalengineering.com.au

Phone: (+61) 492 512 619

Website: myd.vktechsolution.com

Please keep this slide for attribution



CREDITS: This presentation template was created by Slidesgo,
including icons by Flaticon, and infographics & images by Freepik

